

Prevention Peer Network

January 18, 2018



Control Panel

Please note, this webinar is being recorded.

Video has been disabled

Expand Audio for call in information

The control panel is a dark horizontal bar containing several icons and labels. From left to right: a headset icon with a green arrow pointing up, labeled 'Join Audio'; a video camera icon with a red diagonal line through it, labeled 'Start Video'; a person icon with a plus sign, labeled 'Invite'; a person icon with a '2' next to it, labeled 'Participants' (this icon is highlighted with a red border); a screen icon with a green square, labeled 'Share Screen'; a speech bubble icon, labeled 'Chat'; a microphone icon, labeled 'Record'; and the text 'Leave Meeting' in red on the far right.

Type questions & comments here

Agenda

- ❑ Opening Circle
- ❑ Sectors Acting for Equity: Toward a health equity and multi-sector approach to preventing domestic violence
- ❑ Q&A
- ❑ Discussion: Shared expertise, emerging issues, challenges, triumphs

SAVE
→ *the* ←
DATE



SHIFTING THE LENS

Transforming Our Approach to Domestic Violence

STATEWIDE DOMESTIC VIOLENCE CONFERENCE
MARCH 5-6, 2018 | SAN FRANCISCO
MARRIOTT SAN FRANCISCO AIRPORT WATERFRONT

Opening Circle

- Please type in your name, agency and location





Sectors Acting for Equity:

Toward a health equity and multi-sector approach to preventing domestic violence

Alisha Somjii, MPH; Morgan Croce

alisha@preventioninstitute.org

morgan@preventioninstitute.org

CPEDV Peer Prevention Network

January 18, 2018

PREVENTION
INSTITUTE



Morgan Croce

Program Assistant
(she/her/hers)



Alisha Somji

Associate Program Manager
(she/her/hers)



Prevention Institute

Objectives

- Describe **community determinants of domestic violence** (DV) and DV inequities related to people, place and equitable opportunity using the **THRIVE framework**.
- Articulate the elements of a **multi-sector, health equity approach** to DV prevention.
- Discuss implementation **challenges** and **opportunities**

“People’s health is strongly influenced by the overall life odds of the neighborhood where they live. Indeed, place matters.”





The health inequities we see... are not about just individual bad choices;

they are about things not being fair.

- Dr. Nancy Krieger, Harvard School of Public Health



Health Equity

Health equity means that **everyone has a fair and just opportunity to be as healthy as possible.** This requires removing obstacles to health such as poverty, discrimination, and their consequences, including powerlessness and lack of access to good jobs with fair pay, quality education and housing, safe environments, and healthcare.

What's health equity got to do with it?



How the Structural Drivers Play Out in the Environment to Affect DV & Safe Relationships



Tarana Burke who started “Me Too,” attends Golden Globes with actor Michelle Williams

Verla... Es Quererla

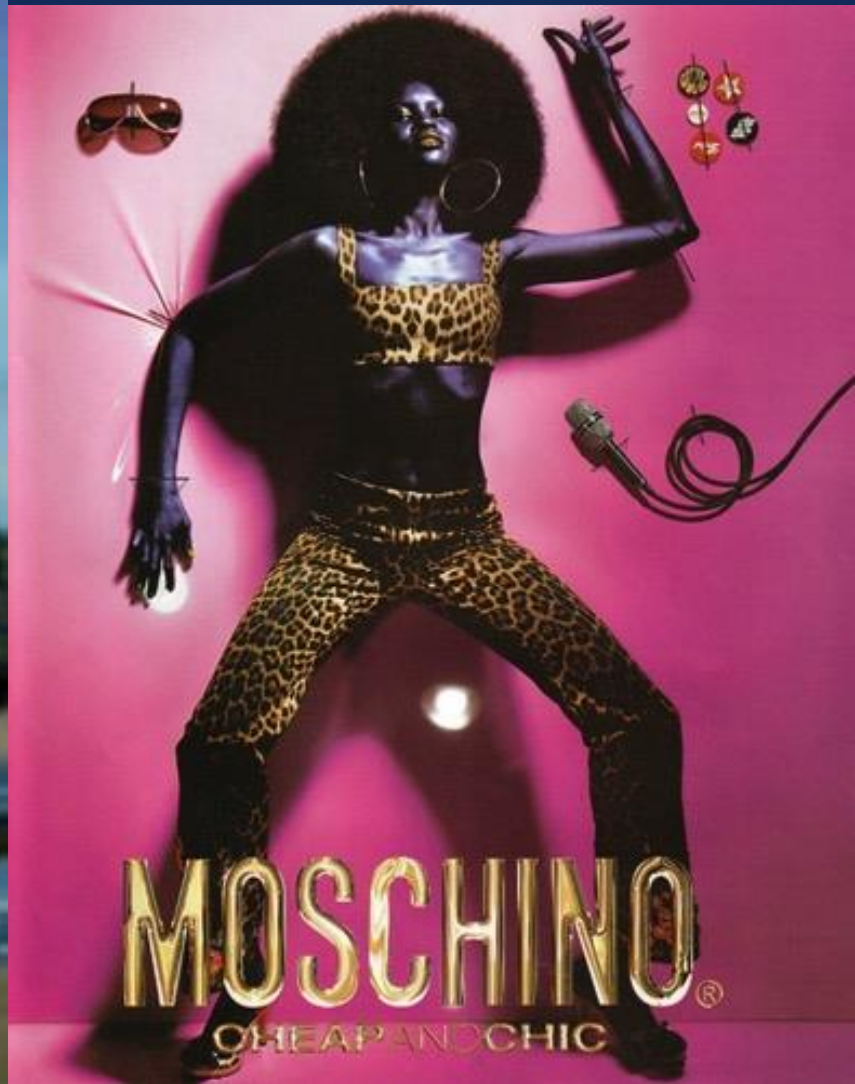


Image source: <http://www.genderads.com/styled-8/photos-20/>



What's health equity and safety got to do with it?

SAFE Project Health Equity Principles

- Address the **structural drivers** (e.g., racism, sexism, disenfranchisement, etc.) that contribute to IPV and inequities in rates of IPV.
- Ensure that communities most impacted by IPV have the **power, opportunity, and resources** to drive solutions and priorities.
- Promote **holistic solutions** that reduce future violence while supporting healing from the harms of current and past violence.
- Support individual, relationship, and community **empowerment and determination**.



Two steps to prevention



Take two steps to prevention



Inequities in Rates of DV

- Women ages 18 to 24 and 25 to 34 generally experienced the highest rates of intimate partner violence
- DV is typically more common among people of color compared to white women and men, with women of color experiencing significantly higher rates overall
- In California, bisexual, gay, and lesbian adults are close to two times more likely to be victimized.

Take two steps to prevention



Exposures & Behaviors

History of multi-generational violence

History of witnessing violence

Social and emotional isolation

Lack of healthy role models and relationships

Lack of emotional regulation and
nonviolent social skills

Adherence to norms related to gender
inequities, violence and non-intervention

Awareness of lack of community
sanctions against DV

Desire for power over and
control in relationships



It is unreasonable to expect that people will change their behavior easily when so many forces in the social, cultural, and physical environment conspire against such change.

- Institute of Medicine



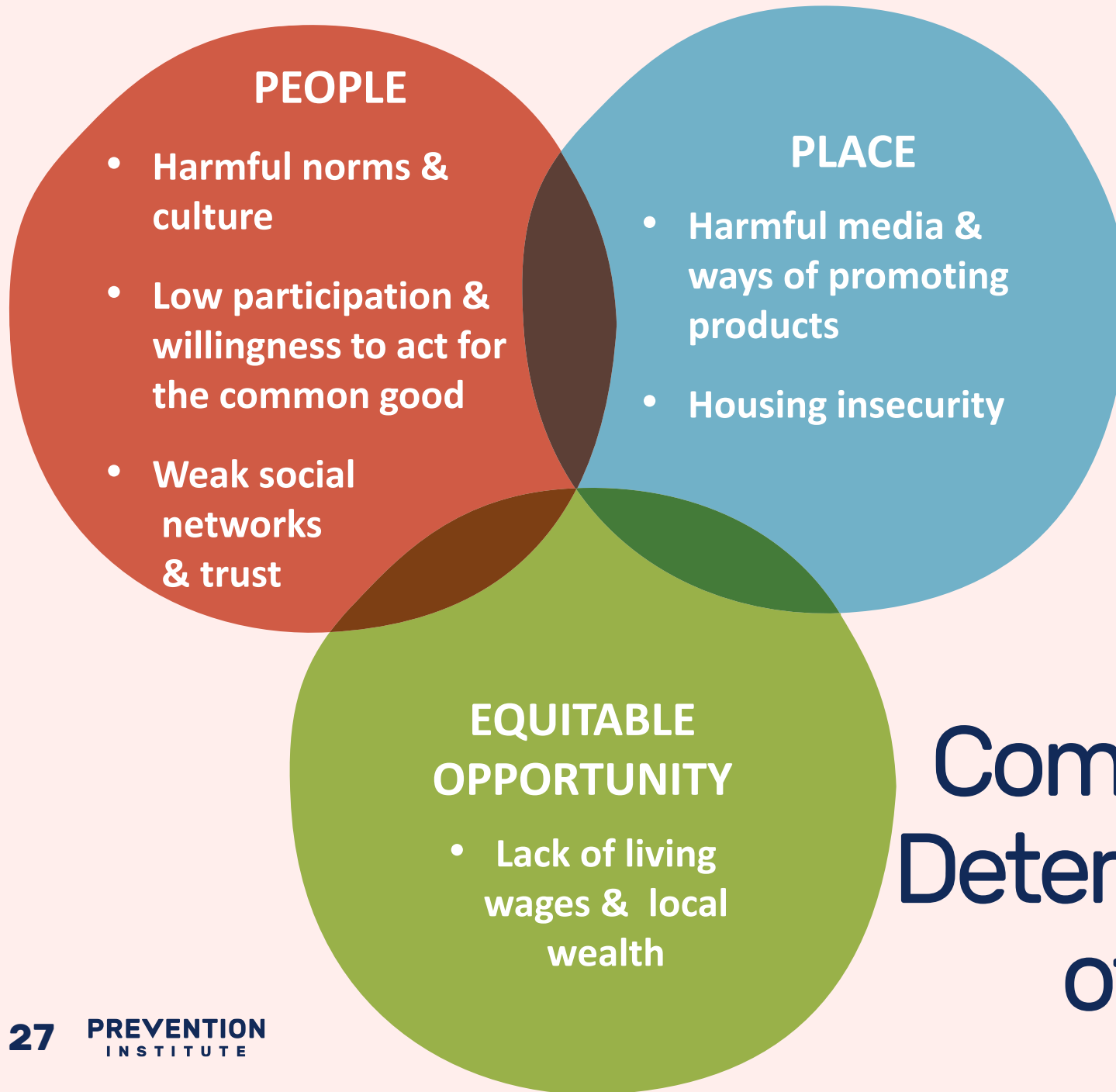
Take two steps to prevention





**Structural
Drivers**

**Community
Determinants
of Domestic
Violence**



Community Determinants of DV

People

The relationships between people, the level of engagement, and norms, all of which influence DV outcomes.



Healthy norms & culture

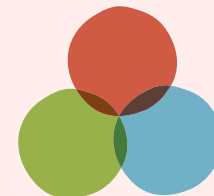
- Norms that support healthy and equitable relationships
- Norms that support non-violence
- Norms that support engagement in family matters



Strong social networks & trust



Strong collective efficacy and community sanctions against domestic violence



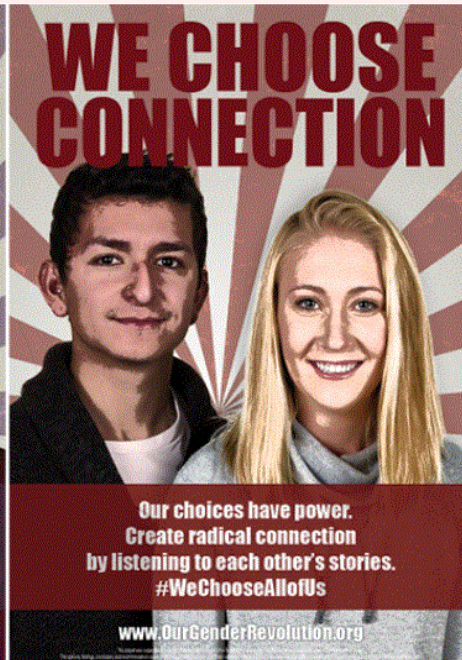
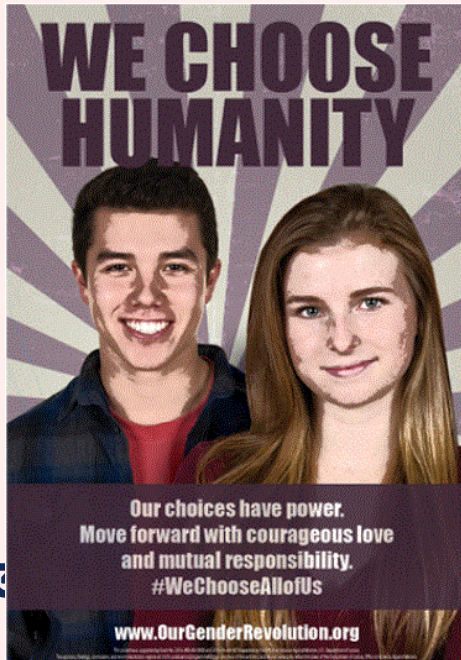
Mobilizing men and boys as allies



A CALL TO MEN

The Next Generation of Manhood

Idaho Coalition Campaign



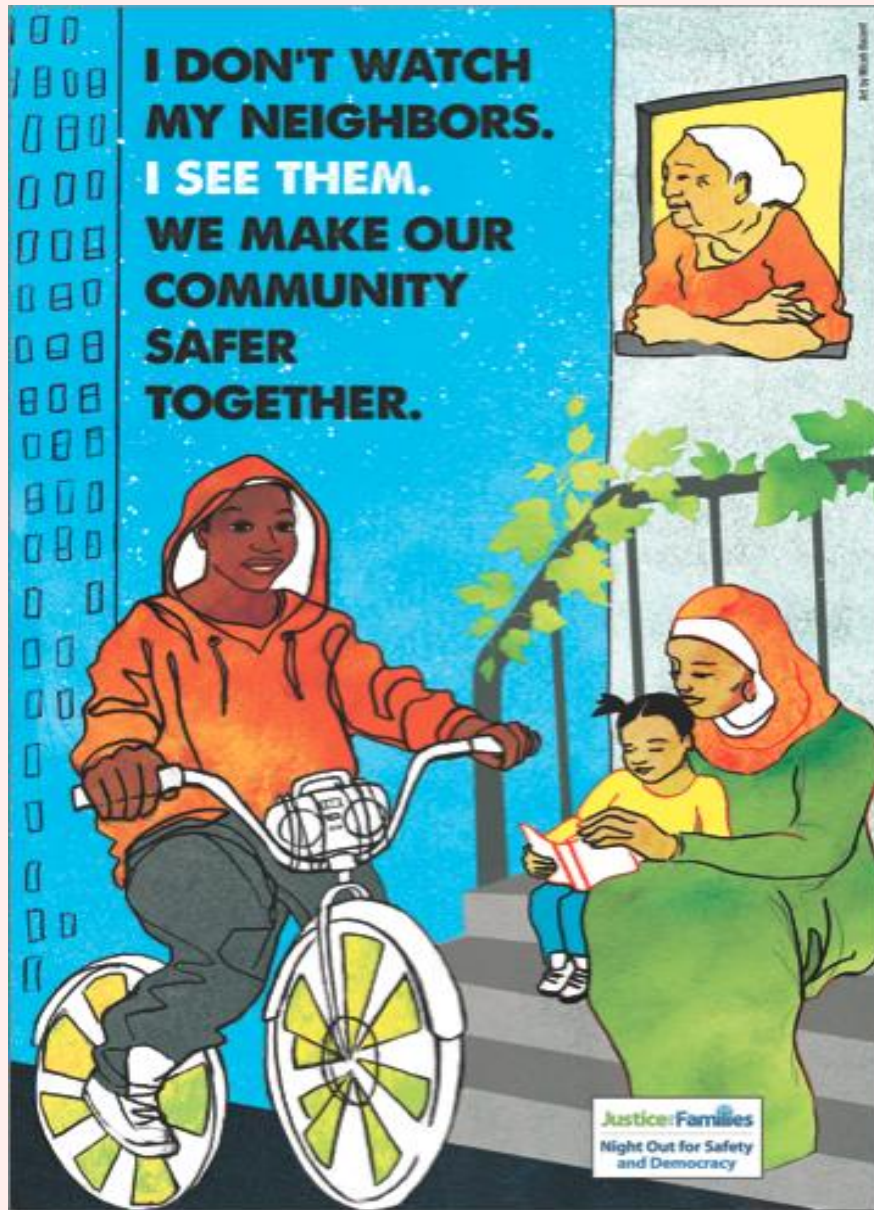
Our Gender Revolution
**Re-imagine communities
with gender & social equity!**

FREE two-day *Our Gender Revolution*
Youth Leadership & Organizing Workshop
for High School Students

June 23th - 24th • Moscow, Idaho



Register soon! Space limited.
For information go to www.ourgenderrevolution.org



cc: CityLab

Place

The physical environment in which people live, work, play, and go to school.



Media and marketing practices that support healthy norms of culture

Low alcohol outlet density



Safe, stable and affordable housing

Alcohol Outlet Density Policy



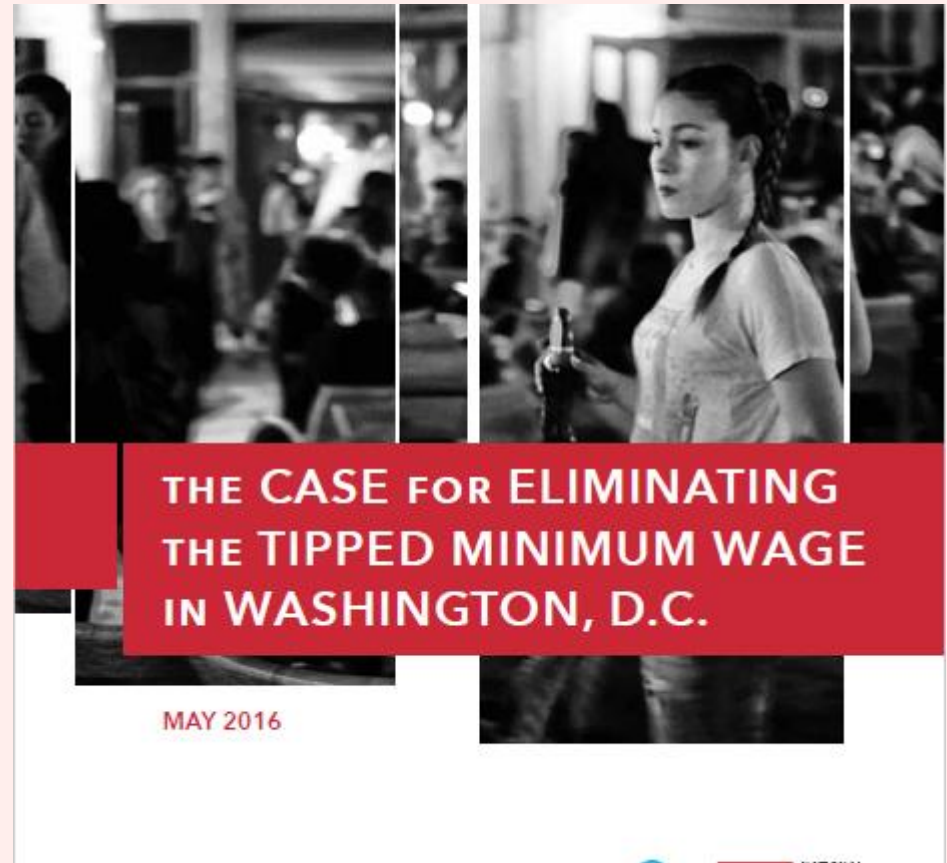
Equitable Opportunity

The level and equitable distribution of opportunity and resources.



Family and community economic security

Restaurant Opportunities Centers United





Low Wage, High Risk Pilot

A Futures Without Violence pilot project to address the **vulnerability of low-wage workers** to gender-based violence and exploitation.

Main sectors: retail, food service, hotel, homecare, and agricultural sectors



- Harmful norms & culture
- Weak social networks and trust
- Weak community sanctions against DV
- Harmful media & ways of promoting products
- Housing insecurity
- Family and community economic insecurity


Priority Sectors

- Healthcare
- DV services
- Public health
- Housing
- Community development
- Sports
- And more



Healthcare Sector Roles

- Clinical practices
- Organizational practices
- Anchor institution
- Champion/advocate
- Coalition Member/Partner
- More



We need to move into a new chapter and transform the role of the healthcare sector beyond case identification.

Dr. Elizabeth Miller, Children's Hospital of Pittsburgh

Healthcare as Anchor Institutions

- Connecting African American Men to Economic Opportunity in New Orleans



Collective impact and organizing in Wyoming



April 8, 2016

The Wage Gap between Wyoming's Men and Women: 2016

By Catherine Connolly, PhD JD Professor
University of Wyoming, Department of Gender and Women's Studies
1000 E. University Ave, Dept. 4297
Laramie, Wyoming 82071
307.766.2733 cconn@uwyo.edu, or gwst@uwyo.edu

Wyoming consistently ranks as a state with one of the worst wage gaps in the country”

Common agenda:
Decrease gender wage gap through organizing and addressing shared risk and protective factors



East San Jose – Example of CACHI



East San Jose ACH – Examples of Strategies



- Changing the narrative about violence, race and health equity
- Promotor@s model
- School Climate/Youth Leadership
- Trauma/Healing Informed development

Housing Sector Roles

Increase access to affordable and stable housing

- to improve *housing security* and *family and community economic security* and protect *social networks and trust*.

Improve the physical design of housing settings

- to promote *healthy norms*, encourage *willingness to take action on IPV as a community issue* and facilitate *social networks and trust*.

Promote a positive sociocultural environment within housing settings through everyday interactions and programs and services

- that model and reinforce *healthy norms*, demonstrate *willingness to address IPV as a community issue* and nurture strong *social networks and trust*.

Charlotte Housing Authority



Charlotte Housing Authority

Creating Community,
Empowering Families, and
Building Partnerships



*Our Resident Safety Department
helps to ensure that all our residents
are provided with safe housing.*



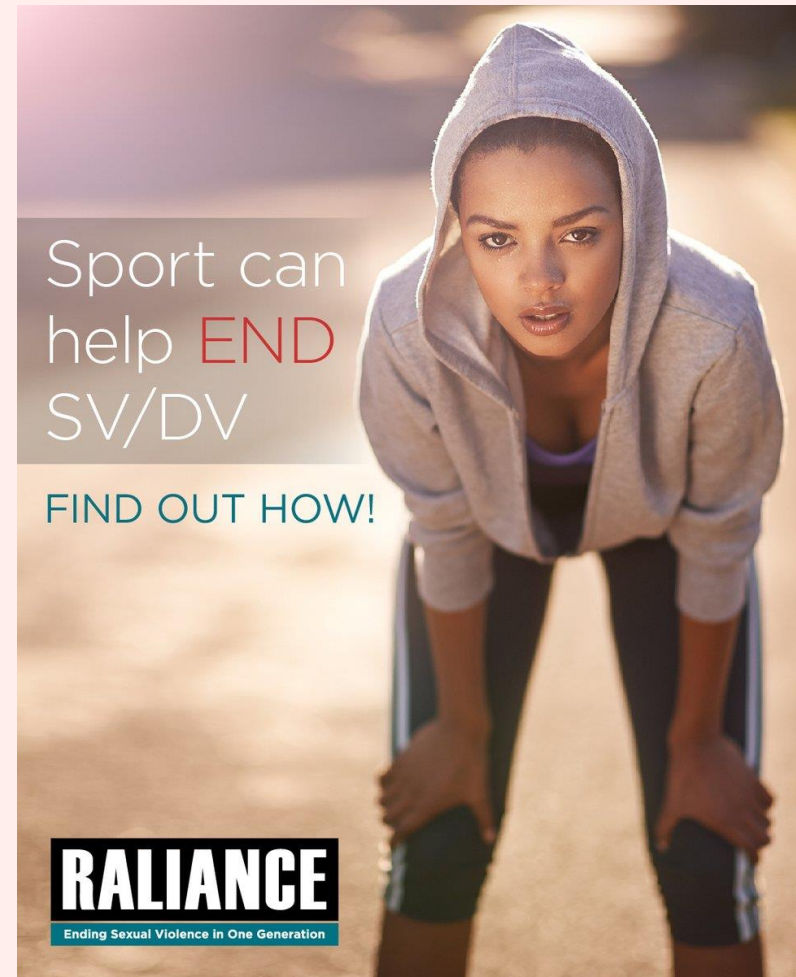
Activities through the housing authority

- Bystander trainings for community leaders, residents, staff, & vendors
- System-wide policy regarding staff training and response to violence
- Community meetings and resource referrals for families who witness or experience violent events
- Youth outreach contest and community social marketing campaign



How Sport Relates to DV Prevention

- Values, norms, and behaviors can be taught and reinforced throughout the sport pipeline to cultivate and support healthy individuals, teams, and communities



Sport Sector Activities

- Enforce Policy
- Engage in Partnership
- Join Communities of Practice
- Build Champions
- Provide Resources
- Educate & Train
- Measure Impact
- Raise Awareness





Key Elements of the SAFE Approach

- **Health equity and social justice**
- **Prevention and healing**
- **Underlying contributors**
- **Resilience**
- **Multi-sector and multi-movement**

Challenge: “I can’t change community factors alone!”

- Locate coalitions supporting resident priorities
- Participate in coalitions for larger issues (e.g. housing) and bring your area of expertise





Interested in learning more and sharing feedback with us?

- *Health Equity Principles*
- *Housing brief*
- *Community Development brief*
- *“A Health Equity and Multisector Approach to Preventing Domestic Violence : Towards Community Environments that Support Safe Relationships in California” (SAFE Report)*

**Share your email &
products of interest
in the text chat!**

**See you at the Partnership's
conference in March!**



Alisha Somji & Morgan Croce

alisha@preventioninstitute.org

morgan@preventioninstitute.org

THANK YOU!

A Health Equity and
Multisector Approach to
Preventing Domestic Violence

Toward Community Environments that
Support Safe Relationships in California

PREVENTION
INSTITUTE